



Welcome to the 4th edition!

Winter is upon us and so is the one year anniversary of the Jimmy Heath House! One cold December day a year ago many of you gathered with us at the Ribbon Cutting Ceremony to celebrate the completion of many years of hard work in developing the Jimmy Heath House. One year later we are pleased to share with you the 4th edition highlighting news with the project.



Congratulations to Louis C., who graduated from the FreeStore's Cincinnati Cooks Program on October 14th!

Please donate to help us continue to make an impact on the tenants of Jimmy Heath House

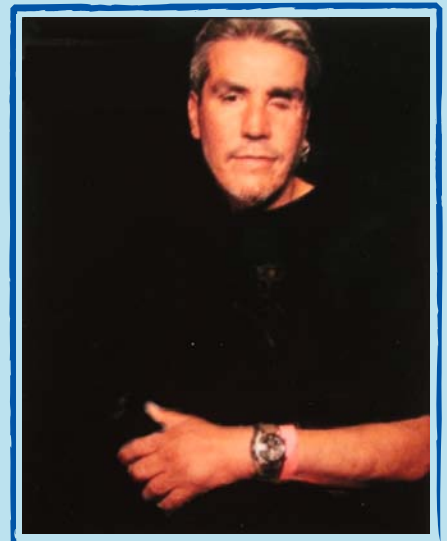
Please consider making a donation to OTRCH to maintain the Jimmy Heath House. While we are fortunate to have funding from major sources in 2012, we still have an operating gap. Much of your donation would help tenants with food, laundry, and also help to maintain the building.

donations can be made to:

Over-the-Rhine Community Housing
c/o Jimmy Heath House
114 W 14th Street, Cincinnati, OH 45202
or donate online at www.otrch.org

In memory of Roy Vega, 1963-2011

Roy Vega spent many years on the streets of Cincinnati before finding a home at the Jimmy Heath House. Roy lived at the Jimmy Heath House from February 2011 until he passed away October 1st. Roy is remembered among his friends and peers for his good natured generosity, his loyalty and his sense of humor. Roy, also known as "Patch" for the patch he wore over an eye he lost to a gunshot wound, is also remembered as a survivor whose body carried the scars of many tough days and nights on the streets. Roy was not easily intimidated and met most challenges with a determined tenacity. Both his friends and staff at the Jimmy Heath House were witness to Roy's often public struggle to transition from the street into permanent housing. While at the Jimmy Heath House, Roy searched for ways to remain true to friends who were still out on the street and to free himself from some of the behaviors that, even he acknowledged, were holding him back. At moments of frustration with rules or policies at the Jimmy Heath House, Roy would sometimes beat his chest, saying "I'm trying to do right, I'm trying to do right" and those of us who met Roy along his path know that to be the truth. On October 14th, Roy's family from Cincinnati and Chicago joined with his family from the streets and the



Roy "Patch" Vega

Jimmy Heath House to remember Roy in a service led by a friend familiar with Roy for many years, Pastor Fred Cook of First Lutheran Church. Roy's ashes were laid to rest on his mothers grave in Chicago.

Resident Spotlight: Pleas

Pleas, a Jimmy Heath House resident, has worked most of his life. He was a licensed meat cutter, construction worker, and ran industrial sewing machines for 18 years, making tarps and tent cloth. Yet for almost 30 years his addiction to alcohol left him homeless and on the streets of Cincinnati. Born in Mississippi, Pleas moved with his family to Sandusky, Ohio when he was still an infant. Pleas started drinking at a young age and dropped out of school before receiving a high school diploma. He went to vocational school to learn meat cutting, but found working in cold freezers too demanding. After a brief move to Pittsburgh to work construction, Pleas found his way to Cincinnati, encouraged by a co-worker who had family here.

From Pleas' arrival in Cincinnati in 1978 until finding an apartment at the Jimmy Heath House in 2010 Pleas lived mostly on the streets. He credits Buddy Gray and the Drop Inn Center for providing safe and supportive shelter when he first arrived in Cincinnati. Pleas refers to the Drop Inn Center as his "Ace in the Hole," a place he could always return to in the days that Pleas describes as

"Days when it was easier to spend money on booze and cigarettes than it was to pay rent." Though help had been offered to Pleas through different agencies and even through employers, Pleas credits a visit to GCB's Paths to Recovery Program office on Elm Street in 2010 for changing his mind about accepting help. Pleas recounts that Path to Recovery staff's willingness to reach out to him on the street and the workers' genuine concern helped him through the process of finding housing at the Jimmy Heath House.

On December 21, 2011, Pleas will celebrate his one year anniversary at the Jimmy Heath House. Pleas has volunteered to maintain the Jimmy Heath House garden, cut the grass, pull weeds, and clean up surrounding vacant lots. He has regularly attended house meetings and in-house AA meetings. In early December, Pleas will have eye surgery that he has needed for years. As Pleas puts it, "When I was on the street I thought I had seen all there was to see and I didn't really care about whether I could see or not. I need the pushing and prodding the team gives me here."

Jimmy Heath House Testimonial:

"Without the Jimmy Heath House the residents they serve would continue to cycle through the criminal justice and social service systems which has a negative impact on the individual and the community.

The Jimmy Heath House meets their clients where they are and provides the opportunity to have a safe place to live as they move closer to a life of sobriety." - Sgt. Steve Saunders



Jimmy Heath House Service Team

We have an excellent service team at Jimmy Heath House!

Over-the-Rhine Community Housing was fortunate to find partners in Greater Cincinnati Behavioral Health Services (GCB) and Alcoholism Council of Cincinnati when designing the Jimmy Heath House. These service providers have been strong advocates of the housing first model and helped the project become a reality. With help from the Health Foundation of Greater Cincinnati, GCB and Alcoholism Council received a multi-year federal grant to provide services at JHH from the Substance Abuse and Mental Health Services Administration (SAMHSA). GCB and Alcoholism Council staff are located on-site and provide an array of services including case management, individual and group counseling, peer support, and countless referrals for other services. The service team is a very dedicated group of individuals who are helping tenants change their lives for the better. One tenant put it this way recently, "I am learning how to live again."

Jimmy Heath House Celebrates One Year Anniversary!

The Jimmy Heath House celebrates its first anniversary in December 2011. After only one year, key indicators suggest it is an extremely valuable community asset.

In the first year,

- The Jimmy Heath House has been a good neighbor in Over-the-Rhine. Tenants help clean up around the building and keep the area clean and safe for tenants, guests, and neighbors. The JHH Good Neighbor Committee is pleased with the project.
- The project has not slowed nearby development. Market rate housing continues to develop down the street from the project. The project contributes to a positive, mixed-income community.
- Residents are involved in fewer incidents with the police since coming to the Jimmy Heath House.
- Jimmy Heath House tenants are utilizing primary medical services to monitor and address their chronic medical conditions, not area emergency rooms. This may result in great savings to the public health system.
- Residents are consuming less alcohol. The average number of days using alcohol in the past 30 days was reduced by 64% after 6 months and the average number of days on which residents used alcohol to intoxication (5 or more drinks in one sitting) in past 30 days was reduced 44% after 6 months.
- Lives are being stabilized: 22 of the first 25 tenants remain in housing. Two tenants passed away this year after spending many difficult years on the streets with chronic health conditions.
- The project has strong partners who have done a great job coordinating housing and services for the participants. Some of the partners are Greater Cincinnati Behavioral Health Services, Alcoholism Council of Cincinnati, Over-the-Rhine Community Housing, Health Foundation of Greater Cincinnati, SARDI of Wright State University, Cincinnati Health Network, City of Cincinnati Health Department, and the Hamilton County Continuum of Care for the Homeless.
- The project is producing very positive results and has received recognition from around the state.

Resident's Words:

"This place is a blessing. Staff respect and listen to me here. Without it, I'd be nowhere."

Chaplain Bea

Chaplain Bea Broder-Oldach has been a familiar and supportive presence for the residents of the Jimmy Heath House since attending the Jimmy Heath House "Ribbon Cutting" in December 2010. Chaplain Bea's relationship with the Over-the-Rhine community began about 10 years ago when she became a member of the congregation at St. Francis Seraph Church. Her role in the community and with homeless individuals expanded in 2009 when she began her ministry as an itinerant chaplain, making regular visits to First Lutheran Church, Center for Respite Care, Washington Park Nursing Home, Canticle Cafe, Our Daily Bread, and along the streets of

Over-the-Rhine. Through her ministry she encountered many of the future residents of the Jimmy Heath House while they were still on the street. She has noted positive changes in the tenants; both in their physical well being, and in the growing sense of community they have at the Jimmy Heath House. Chaplain Bea has also recently expanded her role at the Jimmy Heath House by agreeing to work as a facilitator for the Jimmy Heath House Tenant Council, which started this month. Originally ambivalent about her role with the council, Chaplain Bea came to see the task as an opportunity to further her work in companioning the tenants of the Jimmy Heath



House along their journey. We at the Jimmy Heath House appreciate Chaplain Bea's commitment to the residents of the Jimmy Heath House and her willingness to meet these folks where they are and to walk with them along their path.

Thank you to the Good Neighbor Committee

The Jimmy Heath House Good Neighbor Committee began meeting in April 2010 to create an agreement on what neighbors could expect from the project and how they could communicate with project staff. The Good Neighbor Process has been very successful and we thank the following individuals for their commitment to the project and participation in the committee:

Vermell Perkins, Rev. Fred Cook, Lann Field, Officer Tim Eppstein, Doris Nelson, Martha Dorff, Dan MacDonald, Sr. Janet Linz, Joe Wynn, Mike Browne, Roger Howell

Xavier University students volunteer

In mid August of this year the "Students Taking Active Roles" (STAR) group from Xavier University began to visit the Jimmy Heath House as part of the group's outreach to organizations in the Cincinnati area. True to their mission statement, the volunteers from the STAR group have taken a very active role at the Jimmy Heath House. The group has demonstrated an earnest commitment to engage directly with Jimmy Heath House residents in a variety of capacities. The group has cooked meals, tutored residents on computer skills, and attended resident basketball games. The STAR group has also taken a proactive stance by suggesting programming that the group would like to bring to Jimmy Heath House residents including a "Faith/Spirit" reflection session. They have also volunteered to organize a canned food drive to benefit residents.

One of the groups organizers, Brooke Eastman, describes her experience at the Jimmy Heath House this way, "While I have been building relationships with the homeless of Cincinnati in different camps around the city for over two years now, the



Jimmy Heath House provides a more consistent and structured way of creating these bonds, as we can focus our discussions on much more than the basic needs of the individual for THAT day." We at the Jimmy Heath House have been impressed and appreciate the STAR group's continued commitment to the residents of the Jimmy Heath House, and the groups consistent follow through on projects.

Visitors from around the world



In September, the Greater Cincinnati World Affairs Council brought a delegation of leaders from Afghanistan to the Jimmy Heath House as a successful model of cooperation among state and local government and a non-governmental organization.

Advisory Board is invested in the Jimmy Heath House

Thank you to the following individuals who meet regularly and participate in the Jimmy Heath House Advisory Board, which oversees and advises the staff on the project:

Chris Ledwin
Fanni Johnson
Bob Pickford
Adam Gelter
Mike Tynan
Bill Gioelli
Kevin Finn
Nick DiNardo
Nan Franks Richardson